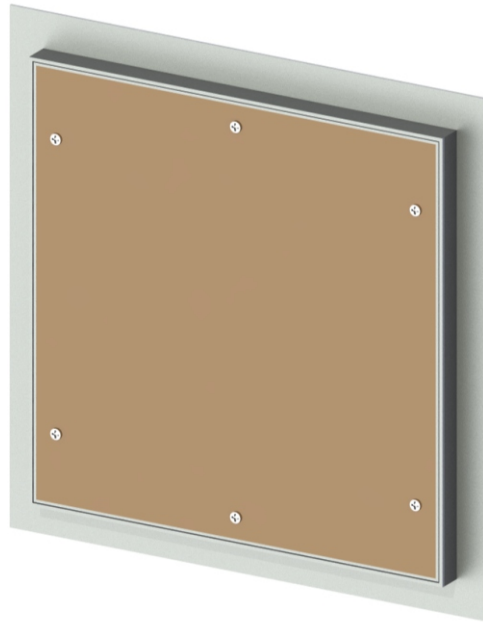


**ADW Series****Recessed Dry Wall Aluminum Access Doors**

**Recessed Dry Wall Aluminum Access Doors** are ideally suited for new installations or for remodeling, in walls and ceilings to accommodate 5/8" drywall, the frame can be reversed to accommodate 1/2" drywall while maintaining an invisible, architecturally pleasing appearance

**Door and Frame** are fabricated from .080 aluminum extrusion with 5/8" drywall inserted into door panel.

**Frame** is recessed to provide similar edge to drywall bead to allow for finishing of wall or ceiling surface.

**Spring Loaded Hinge** pin allows door panel to open to 90 degrees, and also allows for door panel to be removed from frame. Safety chain installed on door & frame for safety.

**Latch** is a concealed touch type.

**Finish** is a mill finish. Drywall is ready to be finished to match surrounding wall or ceiling surface.

**Guide Specification**

Provide Elmdor® ADW Series, Recessed Dry Wall Access Doors (Specify model number and options.) Access door and frame shall be fabricated from .080 aluminum extrusion with 5/8" drywall inserted into door panel with a mill finish. The door shall have a spring loaded hinge pin that allows door panel to open to 90 degrees, and also allows for door panel to be removed from frame. Latch is a concealed touch type. Finish shall be a mill finish and drywall is ready to be finished to match surrounding wall or ceiling surface.



Member of U.S. Green  
Building Council

**ADW**

New: 03/26/15

Recyclable  
Product

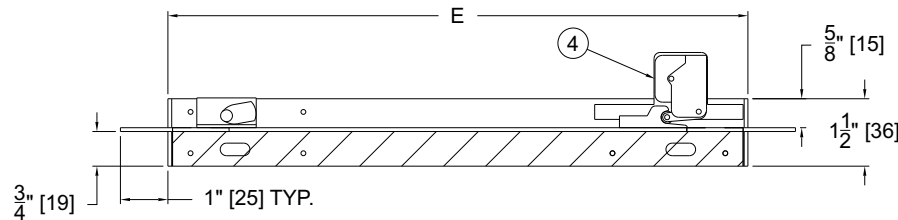
**MODEL NUMBER AND OPTIONS SELECTION**
**BASE MODEL NUMBER**
☐ ADW Dry Wall Aluminum Access Door

**Suffix Options**
☐ - AKL Allen Key Latch  
☐ - CL Cylinder Lock (one per door)

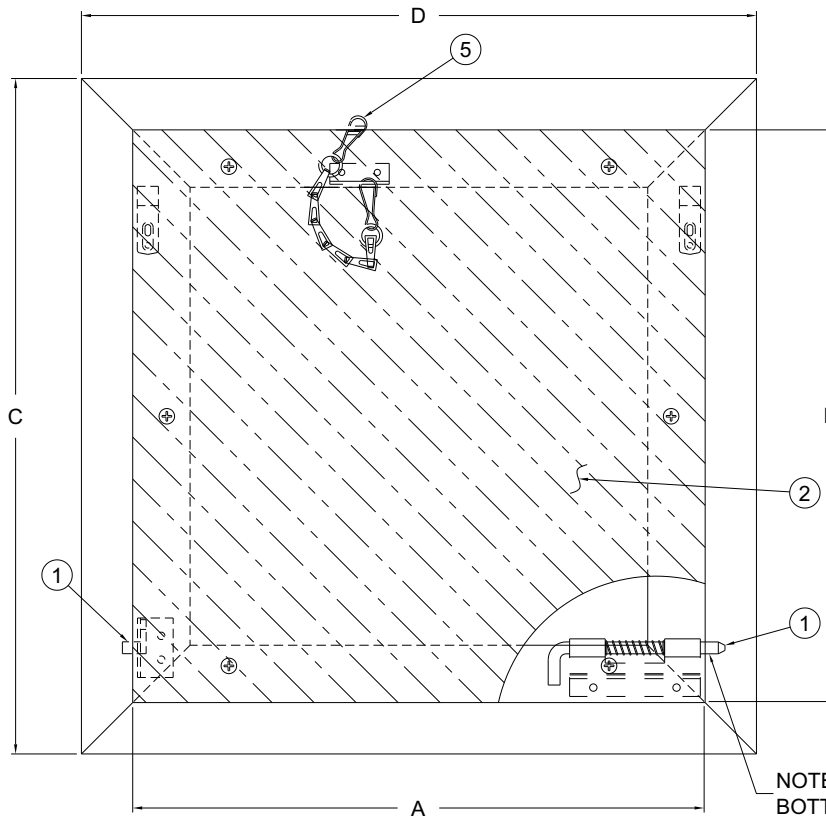
**STANDARD AVAILABLE SIZES**

Special sizes available upon request.

NOMINAL SIZE	A	B	C	D	E	F	LOCK
12" x 12" (305 x 305)	12.00" (305)	12.00" (305)	14.20" (360)	14.20" (360)	12.20" (310)	12.20" (310)	2
16" x 16" (406 x 406)	16.00" (406)	16.00" (406)	18.20" (462)	18.20" (462)	16.20" (411)	16.20" (411)	2
18" x 18" (457 x 457)	18.00" (457)	18.00" (457)	20.20" (513)	20.20" (513)	18.20" (460)	18.20" (460)	2
24" x 24" (610 x 610)	24.00" (610)	24.00" (610)	26.20" (665)	26.20" (665)	24.20" (614)	24.20" (614)	2
24" x 36" (610 x 914)	36.00" (914)	24.00" (610)	26.20" (665)	38.20" (665)	24.20" (610)	36.20" (919)	2


**NOTES:**

1. CONCEALED HINGE
2. DOOR WITH DRYWALL INSERTED
3. FRAME
4. CONCEALED TOUCH LATCHES
5. SAFETY CHAIN (FOR DOORS 12" x 12" OR BIGGER)



NOTE: HINGE SHOULD BE ON THE BOTTOM WHEN INSTALLED IN A WALL

Dimensions are subject to manufacturer's tolerance of plus or minus 1/4". Elmdor/Stoneman assumes no responsibility for use of void or suspended data. Please visit [www.elmdorstoneman.com](http://www.elmdorstoneman.com) for most current specifications. © Copyright 2009 Elmdor/Stoneman, City of Industry, CA, A Division of Acorn Engineering Company.

**SELECTION SUMMARY & APPROVAL FOR MANUFACTURING**

Model Number & Options \_\_\_\_\_ Quantity \_\_\_\_\_  
 Company \_\_\_\_\_ Date \_\_\_\_\_  
 Contact \_\_\_\_\_ Title \_\_\_\_\_  
 Approval for Manufacturing/Signature \_\_\_\_\_

**ADW**

New: 03/26/15