

**SF Series****Surf Access Doors**

Doors are designed for surface installation on drywall, masonry or thin-coat plaster. Door features rounded safety corners and is attached to the frame with a continuous piano hinge allowing a 175 degree opening.

**Door and Frame** are fabricated from 14 gage, galvanized steel.

**Frame** is easily secured to the studs and anchored through pre-drilled holes in each corner. No additional reinforcement is required.

**Latch** is screwdriver operated.

**Finish** is a prime coat suitable for painting.

**Guide Specification**

Provide Elmdor® SF Series, Surf Access Doors (specify model number and options). Access Door and Frame shall be fabricated from 14 gage, galvanized steel with a prime coat finish. Door shall have a continuous piano hinge and rounded safety corners. Latch shall be screwdriver operated.



Member of U.S. Green  
Building Council

**SF***Revised: 3/24/09*

Recyclable  
Product



**MODEL NUMBER AND OPTIONS SELECTION**
**BASE MODEL NUMBER**
☐ SF Surf Access Door

**Suffix Options**

☐ -AKL Allen Key Latch  
☐ -CPH Concealed Continuous Piano Hinge  
☐ -SS Stainless Steel Construction.  
 (Type 304 No 4 Finish Satin Finish)

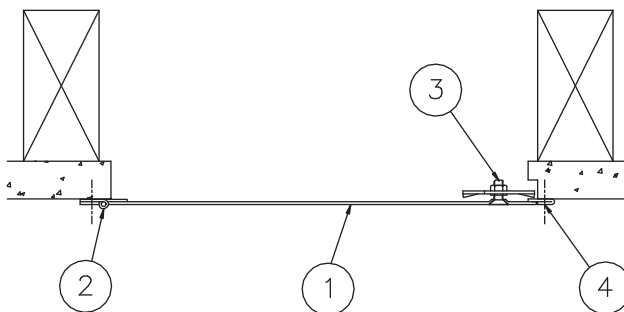
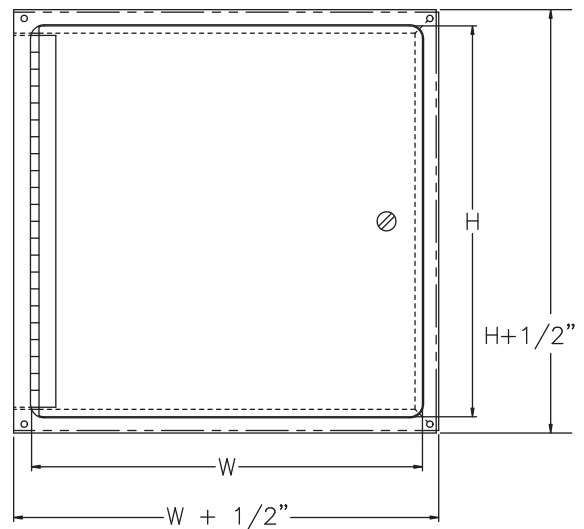
**STANDARD AVAILABLE SIZES**

Special sizes available upon request.

NOMINAL DOOR SIZE (W X H)	LATCHES	WEIGHT
SF 8" x 8"	1	2.5 lbs.
SF 10" x 10"	1	3.5 lbs.
SF 12" x 12"	1	4 lbs.
SF 14" x 14"	1	6 lbs.
SF 16" x 16"	1	8 lbs.
SF 18" x 18"	3	9.5 lbs.
SF 22" x 22"	3	13.5 lbs.
SF 24" x 24"	3	16 lbs.

**NOTES:**

1. DOOR
2. PIANO HINGE
3. SCREWDRIVER OPERATED LATCH
4. MOUNTING HOLES


**SIDE VIEW**

**FRONT VIEW**

Dimensions are subject to manufacturer's tolerance of plus or minus 1/4". Elmdor/Stoneman assumes no responsibility for use of void or suspended data. Please visit [www.elmdorstoneman.com](http://www.elmdorstoneman.com) for most current specifications. © Copyright 2009 Elmdor/Stoneman, City of Industry, CA, A Division of Acorn Engineering Company.

**SELECTION SUMMARY & APPROVAL FOR MANUFACTURING**

Model Number & Options \_\_\_\_\_ Quantity \_\_\_\_\_  
 Company \_\_\_\_\_ Date \_\_\_\_\_  
 Contact \_\_\_\_\_ Title \_\_\_\_\_  
 Approval for Manufacturing/Signature \_\_\_\_\_

**SF**

Revised: 3/24/09